

# Features



## Standard

- Private full floor for each tenant
- Dedicated tenant controller HVAC system per floor
- Oversized windows, coated to reduce UV light
- E-Z clean ceiling hung lavatory dividers
- Ample distancing for workstations
- Sanitary stations throughout
- Hands free faucets and paper towel dispensers
- Daily disinfect cleaning
- Touchless elevator system
- Low VOC paint throughout
- Floors 3 and 17 are fully furnished

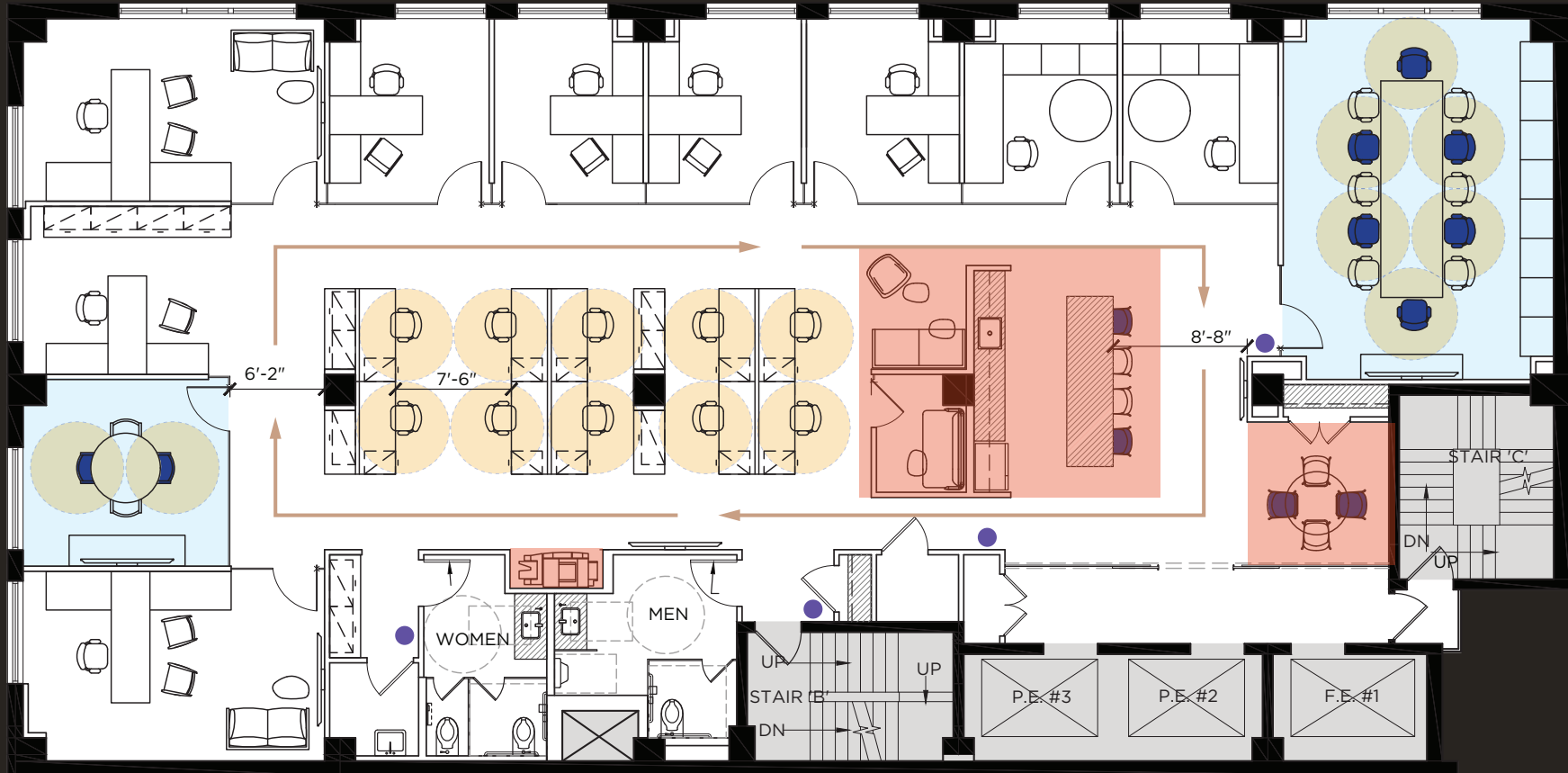


## Add-ons

- All floors may be delivered fully furnished for a premium
- Custom frequency and intensity cleaning
- Antibacterial pantry surfacing

EAST 57TH STREET

LEXINGTON AVE



6,169 RSF 3rd Floor - Concept A - As Built



## PROGRAM SUMMARY

### SHARED SPACE

CONFERENCE ROOMS	01
HUDDLE ROOMS	01
MEN'S RESTROOM	01
WOMEN'S RESTROOM	01

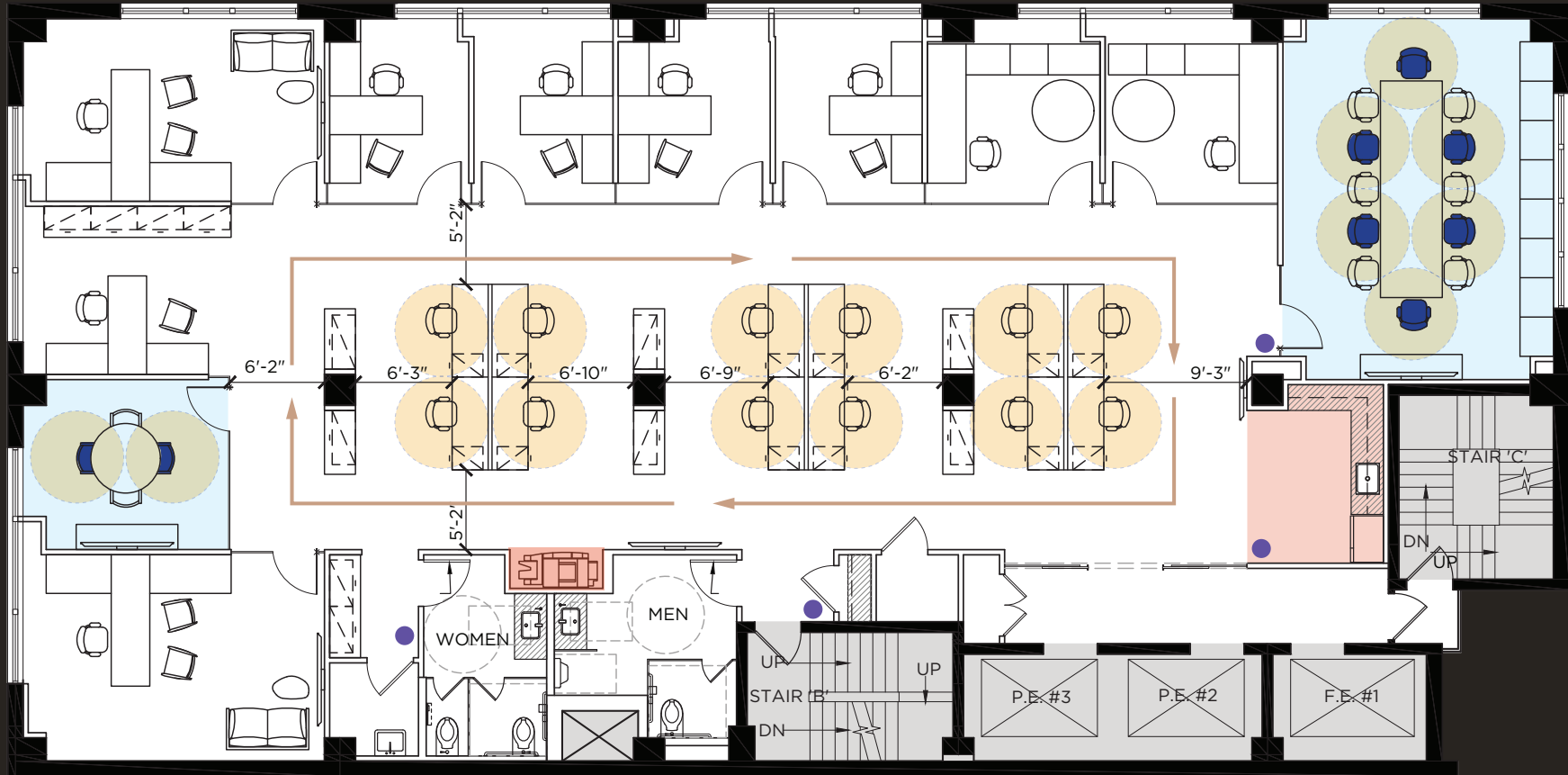
### WORKSPACE

EXECUTIVE OFFICES	02
EXECUTIVE ASSISTANT	01
PRIVATE OFFICES	04
PRIVATE OFFICE / HUDDLE ROOMS	02
WORKSTATIONS (6'-0" X 2'-6")	10

TOTAL HEADCOUNT 19

EAST 57TH STREET

LEXINGTON AVE



6,169 RSF 9th Floor - Test Fit - Concept B

- COMMON AREAS
- MEETING SPACES
- FURNITURE MODIFICATION
- 6'-0" DIAMETER

- CIRCULATION PATH
- HAND SANITIZER

## PROGRAM SUMMARY

### SHARED SPACE

CONFERENCE ROOMS	01
Huddle Rooms	01
MEN'S RESTROOM	01
WOMEN'S RESTROOM	01

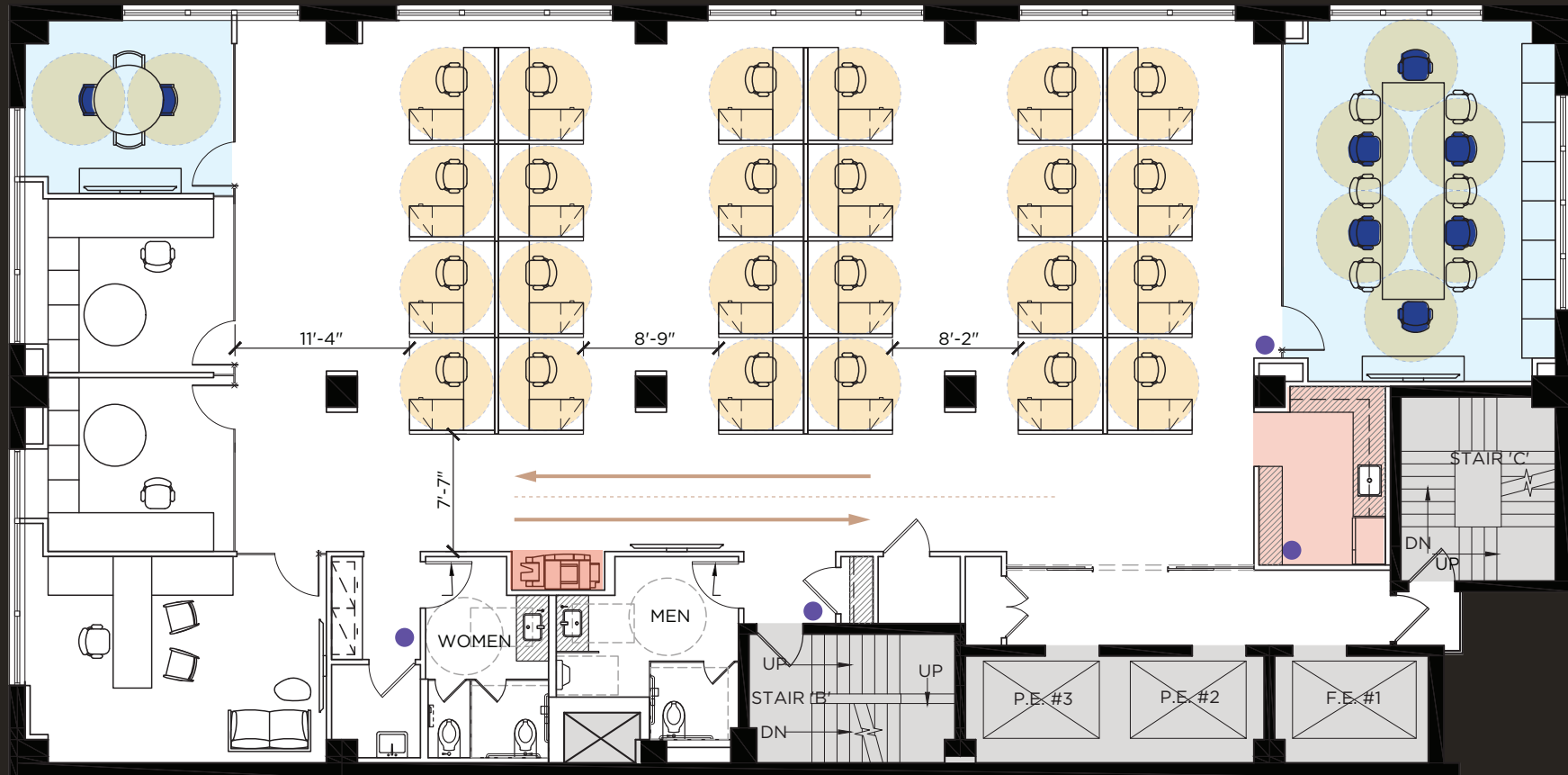
### WORKSPACE

EXECUTIVE OFFICES	02
EXECUTIVE ASSISTANT	01
PRIVATE OFFICES	04
PRIVATE OFFICE / Huddle Rooms	02
WORKSTATIONS (6'-0" X 2'-6")	12

TOTAL HEADCOUNT 21

LEXINGTON AVE

EAST 57TH STREET



6,169 RSF 9th Floor - Test Fit - Concept C

- COMMON AREAS
- MEETING SPACES
- FURNITURE MODIFICATION
- 6'-0" DIAMETER

- CIRCULATION PATH
- HAND SANITIZER

## PROGRAM SUMMARY

### SHARED SPACE

CONFERENCE ROOMS	01
Huddle Rooms	01
MEN'S RESTROOM	01
WOMEN'S RESTROOM	01

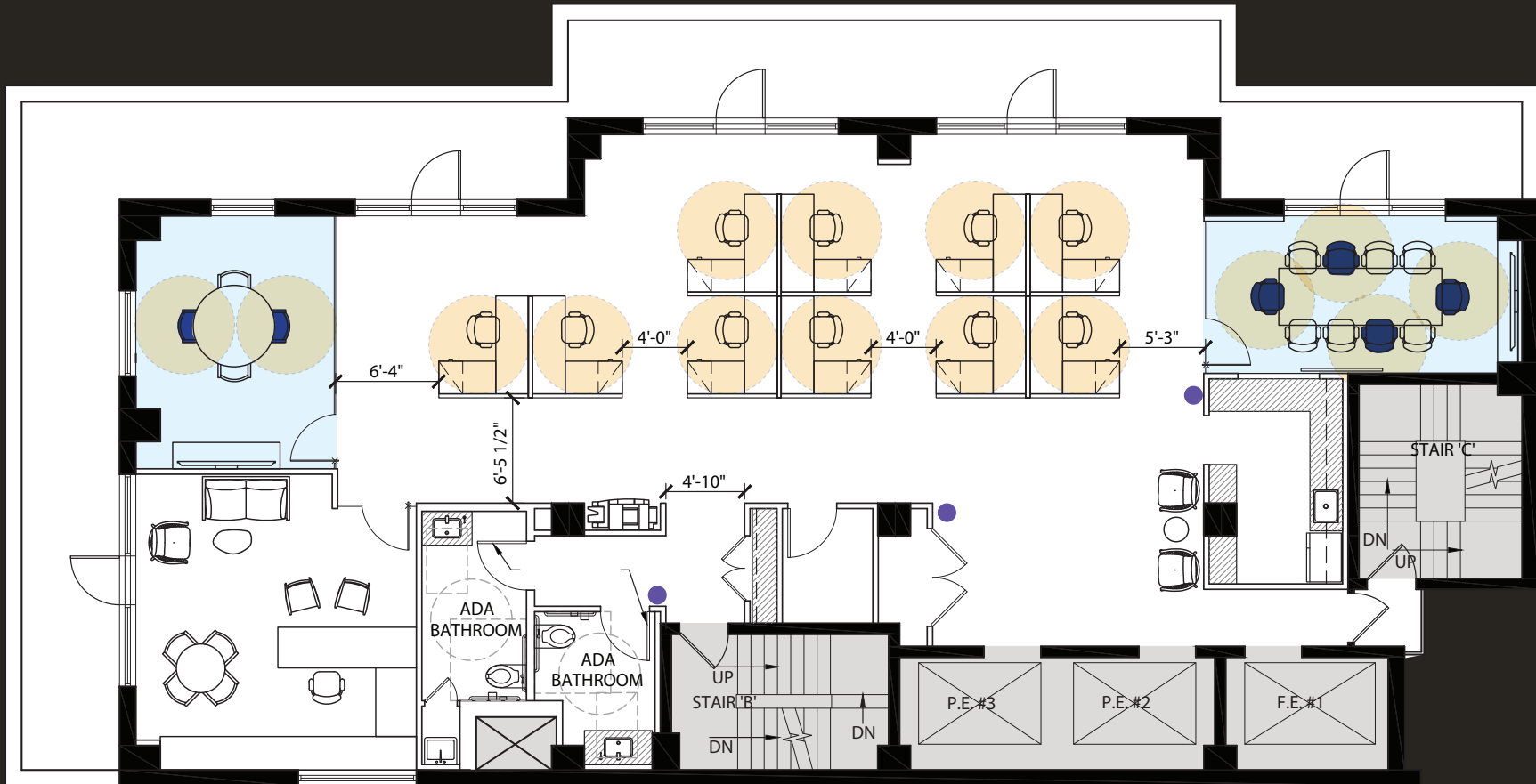
### WORKSPACE

EXECUTIVE OFFICE	01
PRIVATE OFFICE / Huddle Rooms	02
WORKSTATIONS (6'-0" X 5'-6")	24

TOTAL HEADCOUNT 27

EAST 57TH STREET

LEXINGTON AVE



3,614 RSF 17th Floor - Concept D - As Built

- COMMON AREAS
- MEETING SPACES
- FURNITURE MODIFICATION

- 6'-0" DIAMETER
- HAND SANITIZER

## PROGRAM SUMMARY

### SHARED SPACE

CONFERENCE ROOMS	01
HUDDLE ROOMS	01
ADA RESTROOMS	02

### WORKSPACE

EXECUTIVE OFFICE	01
WORKSTATIONS (6'-0" X 5'-6")	10

TOTAL HEADCOUNT 11



Team



**Gensler**

**LX57NYC.COM**



# LX57

**TO LEASE OFFICE SPACE, CONTACT**

**CHARLES CONWELL**

**212-400-6088**

**CCONWELL@ABSRE.COM**

**JOHN BROD**

**212-400-9521**

**JBROD@ABSRE.COM**